

# Eclipse ImmersoJet Burners

Model 2"IJ

Version 2

## Main Specifications

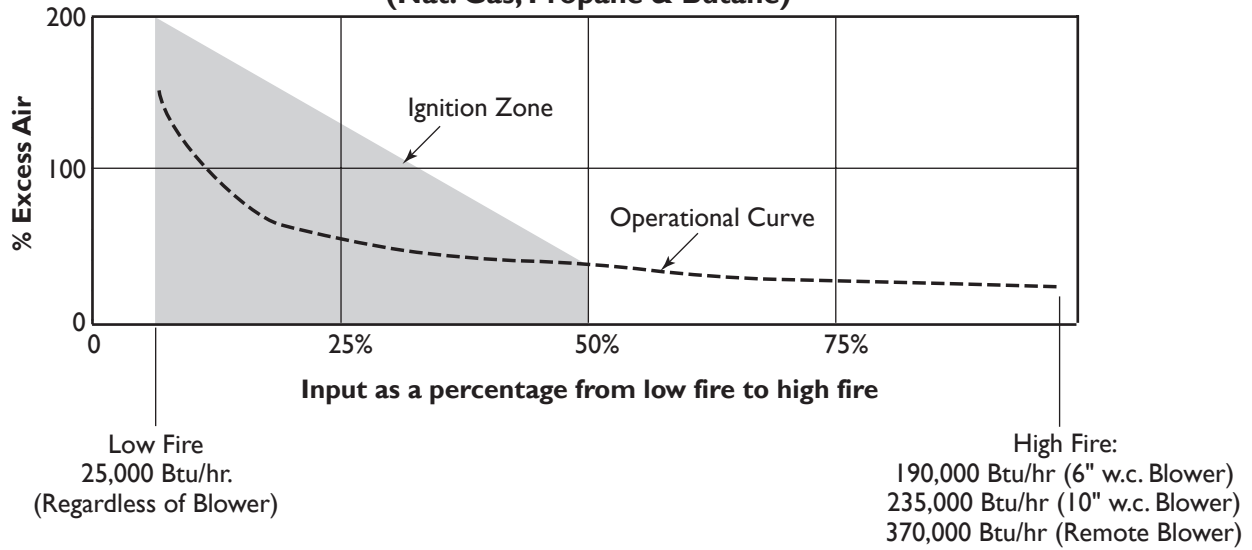
| PARAMETER                                                                          |      | BLOWER SIZE                                                                                         |                          |               |
|------------------------------------------------------------------------------------|------|-----------------------------------------------------------------------------------------------------|--------------------------|---------------|
| Blower Type                                                                        |      | 6" w.c. Packaged (60Hz)                                                                             | 10" w.c. Packaged (60Hz) | Remote Blower |
| Maximum Input (Btu/hr)                                                             |      | 190,000                                                                                             | 235,000                  | 370,000       |
| Minimum Input (Btu/hr)                                                             |      | 25,000                                                                                              | 25,000                   | 25,000        |
| Air Inlet Pressure ("w.c.) @Max. Input<br>– Air pressure at burner inlet (Tap "A") |      | 7.4                                                                                                 | 10.8                     | 26.5          |
| Blower Motor Horse Power                                                           |      | .25                                                                                                 | .33                      | As Specified  |
| Main Gas Pressure ("w.c.)<br>into regulator                                        | Max. | 27.7                                                                                                | 27.7                     | 27.7          |
|                                                                                    | Min. | 10                                                                                                  | 13                       | 27            |
| Backpressure ("wc)                                                                 |      | 1.0                                                                                                 | 1.5                      | 3.7           |
| Weight-less actuator (lbs)                                                         |      | 70                                                                                                  | 75                       | 45            |
| CO emissions (ppm)                                                                 |      | <100                                                                                                | <100                     | <100          |
| Piping                                                                             |      | N.P.T. or B.S.P.                                                                                    |                          |               |
| Flame Detection                                                                    |      | Flamerod or U.V. Scanner.                                                                           |                          |               |
| Fuel <sup>(1)</sup>                                                                |      | Natural gas, Propane, Butane<br><i>For any other mixed gas, contact Eclipse for orifice sizing.</i> |                          |               |

<sup>(1)</sup> Different fuels require different nozzles and orificies.

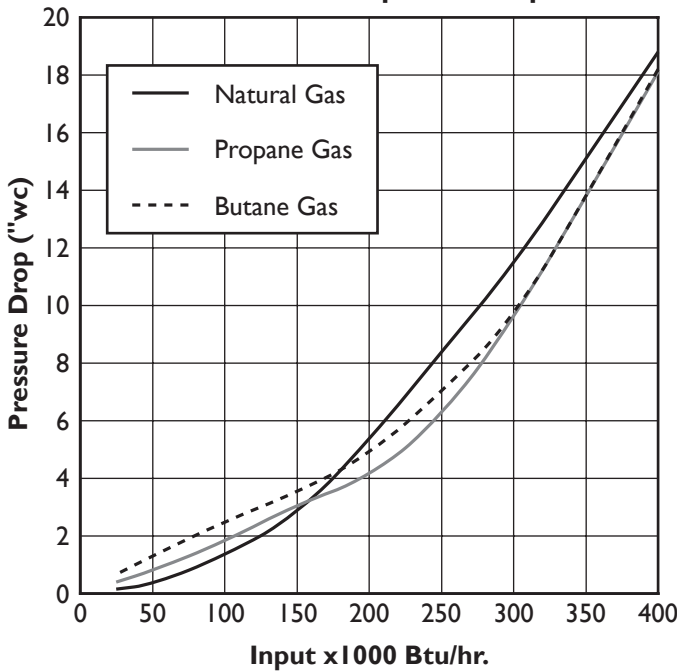
- All information is based on laboratory testing with a tube effective length of 21.6 feet. Different tube sizes and conditions may affect the data.
- All information is based on standard tube design. Changes in the tube will alter performance and pressures.
- All inputs based upon gross caloric values.
- Eclipse reserves the right to change the construction and/or configuration of our products at any time without being obliged to adjust earlier supplies accordingly.
- Plumbing of air and gas will affect accuracy of orifice readings. All information is based on generally acceptable air and gas piping practices.

## Performance Data

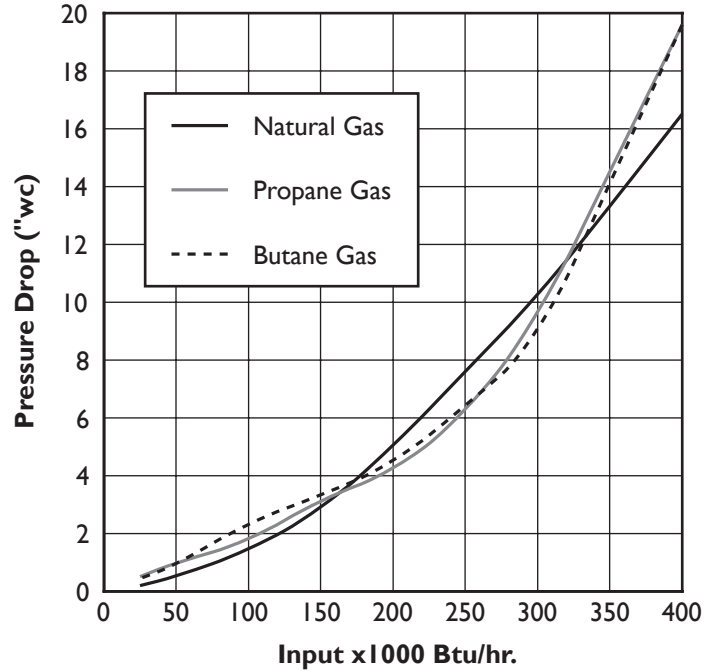
### Typical Operational Curve & Ignition Zone (Nat. Gas, Propane & Butane)



### Gas Orifice $\Delta P$ vs. Input Measured from Tap "B" to Tap "D"

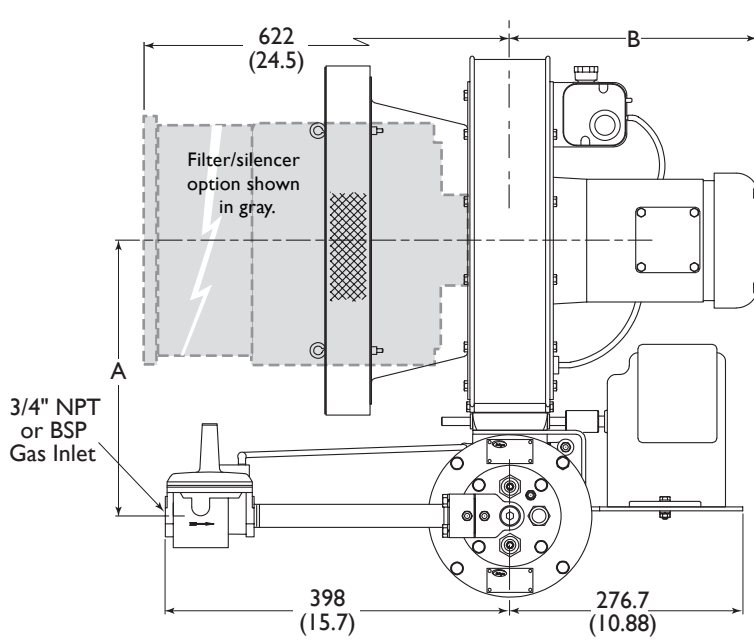


### Air Orifice $\Delta P$ vs. Input @ 3% O<sub>2</sub> Measured from Tap "A" to Tap "C"

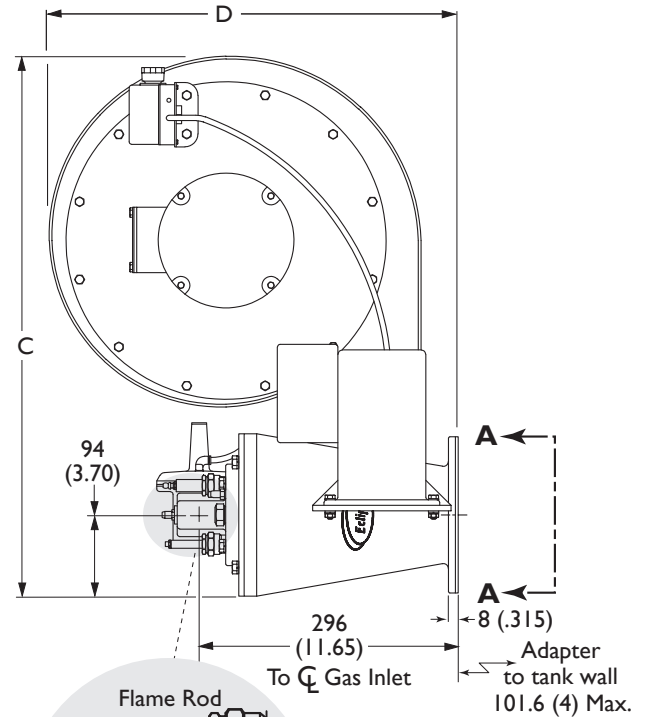


## Dimensions & Specifications

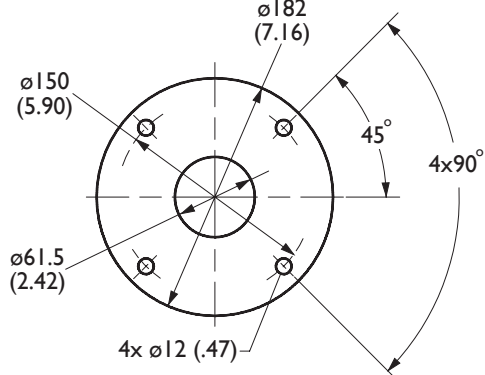
Dimensions in mm (inches)



Note: See Remote Blower drawing below for Tap locations.

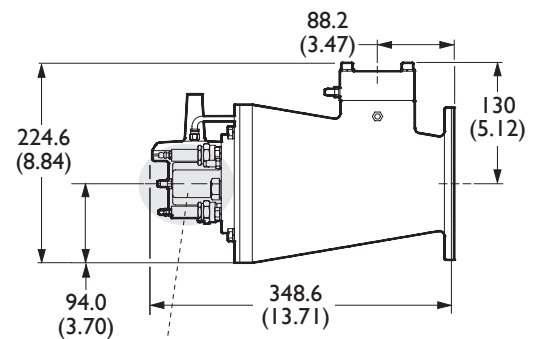
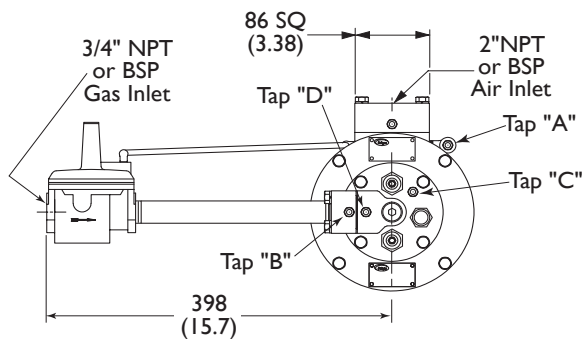


**View A A**



|                      | A          | B          |           | C          | D          |
|----------------------|------------|------------|-----------|------------|------------|
|                      |            | 60Hz       | 50 Hz     |            |            |
| Low Pressure Blower  | 279 (11)   | 190 (7.5)  | 232 (9.1) | 559 (22)   | 414 (16.2) |
| High Pressure Blower | 319 (12.5) | 287 (11.2) | 232 (9.1) | 629 (24.7) | 473 (18.6) |

### Remote Blower



See above drawing for Spark and Flame Rod dimension details.



**Offered By:**

Power Equipment Company  
2011 Williamsburg Road  
Richmond, Virginia 23231  
Phone (804) 236-3800  
Fax (804) 236-3882

---

[www.peconet.com](http://www.peconet.com)